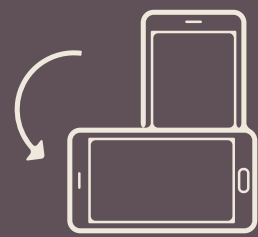


# HASHLOSHA

## GERMAN COLONY



FOR WHATSAPP 



In one of the most prestigious locations in town, The German Colony, lies a luxurious and sophisticated real estate development. The neighborhood is surrounded by picturesque streets, and charming houses and is renowned for its Uniqueness, convenience, and breathtaking views.

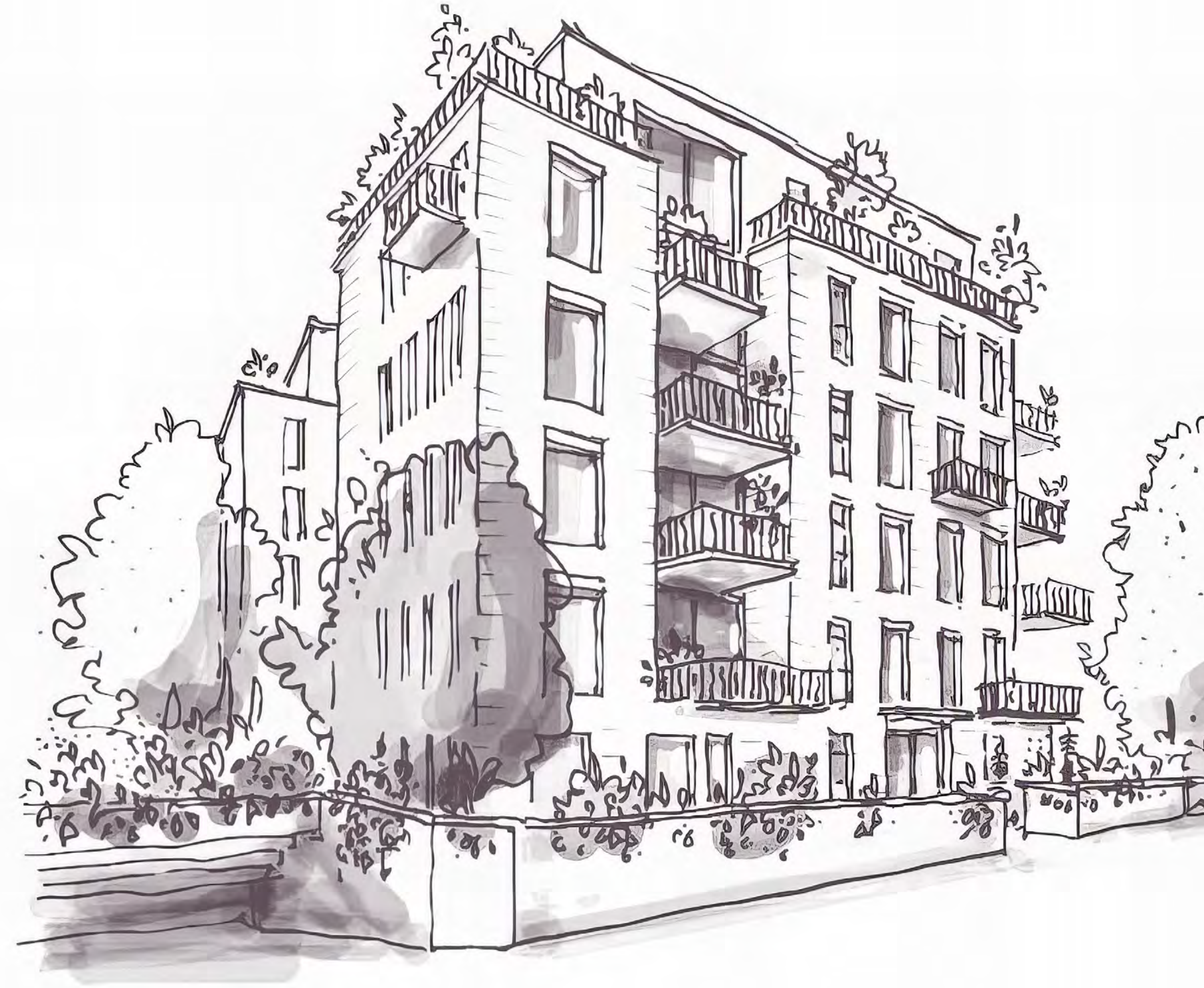




We are proud to introduce

# HASHLOSHA

an exquisite and prominent real estate project. The exceptional residences offers a unique blend of opulent living spaces, state-of-the-art amenities, and breathtaking design, setting a new standard for luxury living.







◆ — THREE LUXURY BUILDINGS — ◆  
**ONE PRIME  
LOCATION**



THE JERUSALEM  
THEATRE

THE GREAT SYNAGOGUE

KING DAVID HOTEL

THE OLD CITY

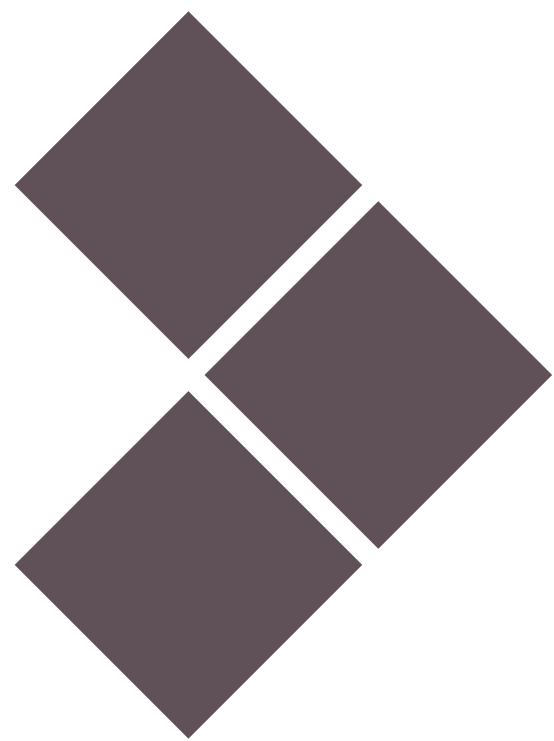
HANSEN HOUSE

MOON GROVE PARK

INBAL HOTEL

THE  
PROJECT





# THE LOCATION





# CLOSE TO YOU



1.1 KM

0.7 mile

Liberty bell park



1.1 KM

0.7 mile

First station



250 M

0.15 mile

Railway park



2.3 KM

1.4 mile

Old city



93 M

0.5 mile

Emeq Refaim street



2 KM

1.2 mile

Mamilla Mall



# BOUTIQUE PROJECT

Located between Ha-magid, Klein, and Bacher streets in the German colony neighborhood, this exclusive project is one of the new exciting urban renewal projects in Jerusalem. The light rail system that passes through our neighborhood is located in close proximity to our project.

Three beautiful and luxurious apartment buildings will create 45 apartments of the highest quality.

A beautiful common garden, underground parking lot, Sukkah balconies, spacious storage rooms, and more will be available to residents.







# THE GARDEN

Hashlosa project features a gated shared garden, offering residents a peaceful retreat in the heart of Jerusalem. Thoughtfully landscaped with lush greenery and seating areas, it provides a secure and serene space for relaxation and community. The garden blends natural tranquility with the convenience of city living, creating an exclusive, private haven for residents.









# THE PENTHOUSE













# THE GARDEN APARTMENTS







A photograph of a modern apartment terrace. The terrace is enclosed by large glass windows that look into a contemporary interior. Inside, there is a dining area with a round table and chairs, and a living area with a dark sofa and a unique light fixture made of three angled tubes. Outside, on the terrace, there is a large wicker armchair with a grey cushion, a small round table with a black ring on it, and another round table with a dark sofa. The terrace is bordered by a stone wall and a metal railing. In the foreground, there are some purple and white flowers. The text "THE APARTMENTS" is overlaid in white serif font on the left side of the image.

# THE APARTMENTS











# OLD TO NEW: DEMOLITION DAY

ח' בתמוז ה'תשפ"ד | 14/07/24





# CAPITAL INVEST

OVER 30 YEARS OF EXPERIENCE IN  
CONSTRUCTION AND REAL ESTATE.



Capital Invest initiates and operates projects in the Israeli construction sector to create prestigious living environments at the highest levels of luxury.

To meet the high standards, they have set for themselves, Capital Invest works only with recognized leading professionals in the field, including well-known architects, legal advisors, contractors whose work is classified at high levels, and so on. The professional knowledge, experience, and proficiency of each of these professionals ensure impressive results for each project.

Thanks to the highly professional and personal standards, Capital Invest has become one of Jerusalem's most prestigious and well-known real estate firms. The firm is uncompromising about its high standards while diligently preserving the historic appearance of this special city, which is unique and unparalleled in the world.



# THE ARCHITECTS

Designed by renowned **Matti Rosenshine** Architects and crafted with meticulous attention to detail, Project Hashlosa showcases architectural excellence at its finest. The project boasts an iconic and contemporary design that seamlessly blends with the surrounding landscape, creating a visual masterwork that stands out as a symbol of prestige.







# COMMON AREAS DESIGN

Renowned architect **Erez Hyatt** has created a landmark structure that seamlessly blends modern aesthetics with timeless elegance. The iconic design captures the essence of sophistication and sets the project apart as an architectural masterpiece.



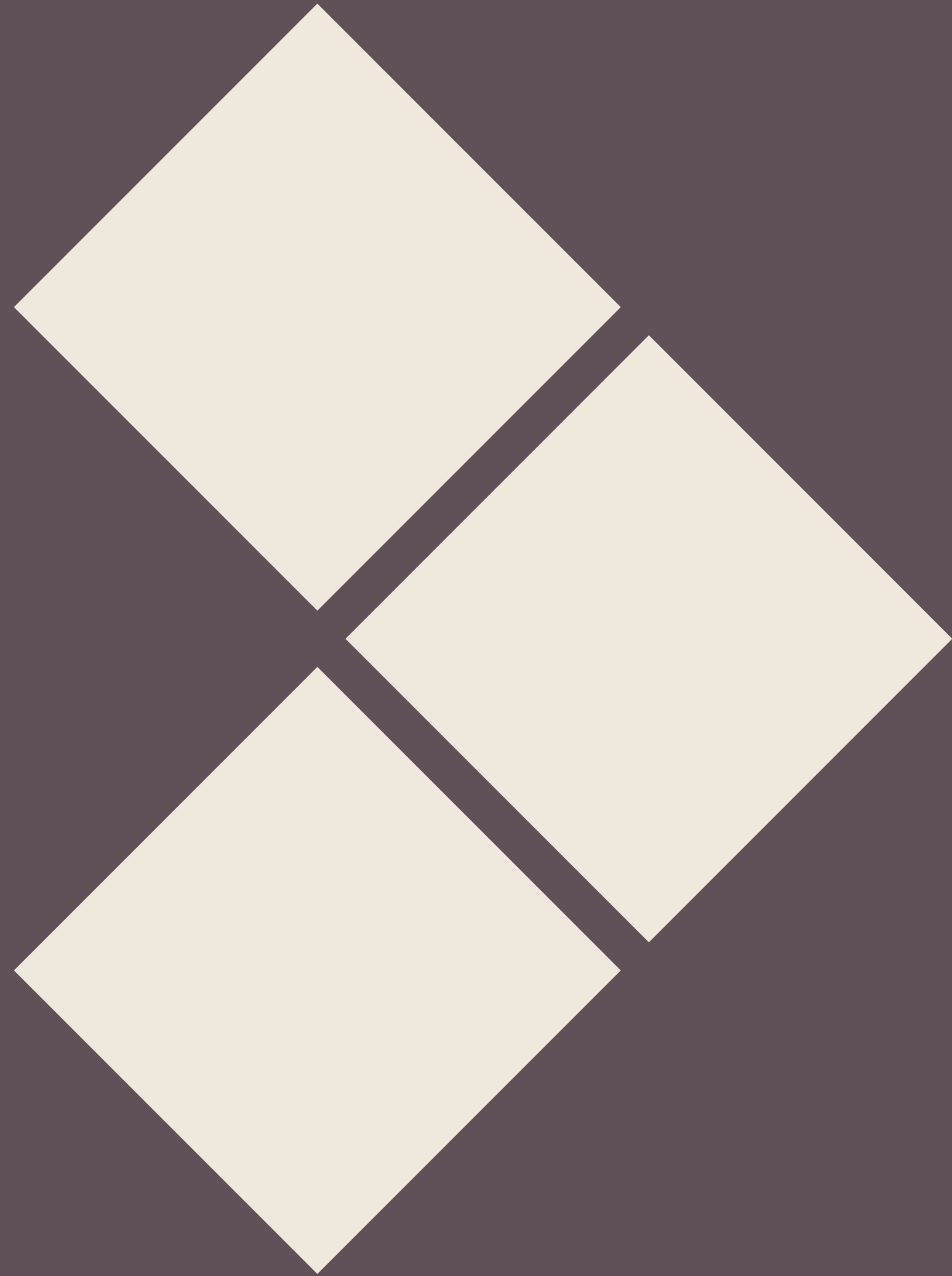
# EXCLUSIVE MARKETING

**The Oren Cohen Group** is a leading and reputable real estate office, which specializes in luxury and high-end real estate projects in Jerusalem.


The office founded and managed by Oren Cohen, a highly respected and well-known realtor, has succeeded for over 30 years of experience and reputation in providing exceptional customer service and professional leading to both the Israeli and international Jewish communities.







# CONTACT US

 +972-54-5596052

[hashlosa@orencohengroup.com](mailto:hashlosa@orencohengroup.com)